

# **-6th Annual- PCCS GOLF TOURNAMENT**

***Support students at  
Poetry Community Christian School***  
18688 FM 986, Poetry, Texas, 972-563-PCCS, [www.poetrychristian.org](http://www.poetrychristian.org)  
**NOW ACCEPTING APPLICATIONS for 2010-11, K-12th grades**

**LONGEST  
DRIVE**

**SATURDAY  
MAY 8, 2010**

**CLOSEST  
TO-THE-PIN**

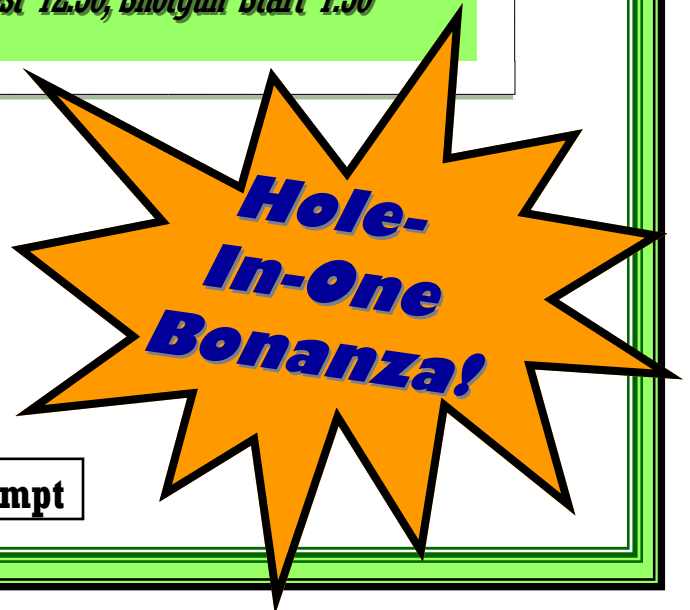
***Buffalo Creek Golf Club, Rockwall***

***4-Player Scramble***

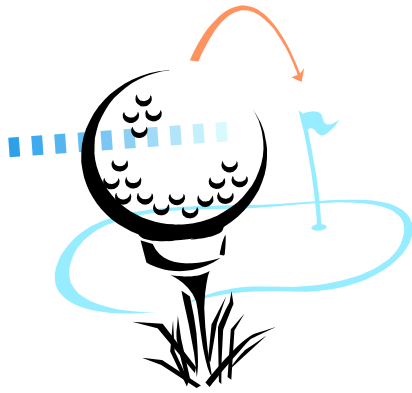
***Check-in Noon, Putting Contest 12:30, Shotgun Start 1:30***

**FANTASTIC  
PRIZES**

**Register Today!**  
[www.poetrychristian.org](http://www.poetrychristian.org)



**Contributions deductible; 501(c)3 Tax-Exempt**



# Poetry Community Christian School

www.poetrychristian.org

-6th Annual-

## GOLF TOURNAMENT

### Saturday, May 8

Buffalo Creek Golf Club, Rockwall

Check-in Noon, Putting Contest 12:30, Shotgun Start 1:30 pm.

## Support our school as a SPONSOR!

- Title Sponsor, \$5000
- Gold Sponsor, \$1000
- New Hole Sponsor, \$125
- Platinum, \$3000
- Friends of PCCS, \$600
- Repeat Hole Sponsor, \$100
- I want to support PCCS anonymously for \$ \_\_\_\_\_

Name: \_\_\_\_\_ Phone: \_\_\_\_\_

Company: \_\_\_\_\_ Fax: \_\_\_\_\_

Address: \_\_\_\_\_

E-mail: \_\_\_\_\_

Your Sign/Banner Message: \_\_\_\_\_

## Support our school as a PLAYER!

Sign up 1 to 4 players If you have fewer than 4, we'll be happy to set you up with a full team!

- Players (\$125 each, includes round & cart rental )

Player 1: \_\_\_\_\_ Player 3: \_\_\_\_\_

Player 2: \_\_\_\_\_ Player 4: \_\_\_\_\_

Team Leader: \_\_\_\_\_ Contact Phone & Fax: \_\_\_\_\_

Contact E-mail: \_\_\_\_\_ Address: \_\_\_\_\_

**SIGN UP TODAY...**To ensure signage, all sponsorships due April 23! Golfers due April 30.  
Sold by (credit for sale goes to): \_\_\_\_\_

**DONATIONS ARE TAX-DEDUCTIBLE TO THE EXTENT PERMITTED BY LAW!**

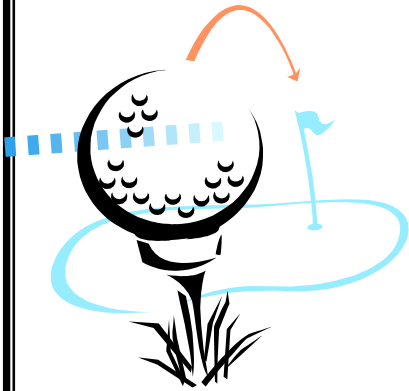
**Payments: please select one:**

Check #: \_\_\_\_\_ or VISA Mastercard # \_\_\_\_\_  
CVV# \_\_\_\_\_ Exp. Date: \_\_\_\_\_

Signature for Credit Card: \_\_\_\_\_

*For office use only:*  
 Rec'd: \$ \_\_\_\_\_  
 Date rec'd: \_\_\_\_\_

**Return completed form with payment to:**  
 Poetry Community Christian School, 18688 FM 986, Poetry, TX 75160 or fax 972-563-0025  
 Questions? 972-563-7227, Quatona Blake



# **-6th Annual- PCCS GOLF TOURNAMENT**

*Support students at*  
**Poetry Community Christian School**  
18688 FM 986, Poetry, Texas, 972-563-PCCS, [www.poetrychristian.org](http://www.poetrychristian.org)  
**NOW ACCEPTING APPLICATIONS for 2010-11, K-12th grades**

**LONGEST  
DRIVE**

**SATURDAY  
MAY 8, 2010**

**CLOSEST  
TO-THE-PIN**

***Buffalo Creek Golf Club, Rockwall***

***4-Player Scramble***

*Check-in Noon, Putting Contest 12:30 p.m., Shotgun Start 1:30 p.m.*

**FANTASTIC  
PRIZES**

**Register Today!**  
[www.poetrychristian.org](http://www.poetrychristian.org)

**Hole-  
In-One  
Bonanza!**

**Contributions deductible; 501(c)3 Tax-Exempt**